

8080-1G Series *TO-3 Power Transistor Sockets*



8080-1G7

FEATURES:

The 8080-1G family of TO-3 Power Transistor Sockets is used for both small and large signal devices. Used in power supplies, power amplifiers, sweep amplifiers, and machine controlled equipment. These sockets are designed to constantly perform.

- Contact rating 10 amps. 20 Amps for 8080-1G44 VDE style
- Sockets accept components with .040 (1,02) .002 -.003 (+0,05 -0,08) diameter lead or .060 (1,52) +.002 -.003 (+0,05 -0,08) diameter leads
- Integral mounting saddle has 20 inch pounds min. thread strength
- Diallyl phthalate and phenolic insulators

MATERIAL SPECIFICATIONS:

Insulator Black phenolic or green diallyl phthalate,
UL rated 94V-0
Mounting Saddle Brass, heat treated
Saddle Plating Electro-tin
Insulating Washer Mica .003 (0,08) thick
Ordered separately-part number 8038-3P1, Fig. 2
Contacts Beryllium copper
Contact Plating Tin, silver or gold

PERFORMANCE SPECIFICATIONS:

MECHANICAL

Vibration 10 - 2,000 Hz, MIL-STD-202, Method 204,
Condition B, transistor installed
Durability 50 Insertions per MIL-STD-12883
Insertion Force 6 Pounds max. per MIL-STD-12883
Withdrawal Force 18 Pounds min., 6 pounds max. per
MIL-STD-12883
Thread Strength 20 Inch pounds minimum

ELECTRICAL

Bulk Resistance Gold 15 milliohms, per MIL-STD-12883
Tin 25 milliohms max.
Silver 25 milliohms max.
Current Rating 10 Amps DC
Insulation Resistance 1,000 Megohms per MIL-STD-202
Dielectric Withstanding
Voltage 1,500 Volts RMS

ENVIRONMENTAL

Operating Temperature .. -55°C to +125°C.
Mechanical Shock Passed MIL-STD-12833, with transistor inserted
at test gage

H

Thomas & Betts

Quality & Innovation From **AUGAT**® Name Brand Products

H20

Thomas & Betts
1555 Lynnfield Road
Memphis, TN 38119
(901) 682-8221 FAX (901) 537-8805

T0-3 Power Transistor Sockets 8080-1G Series

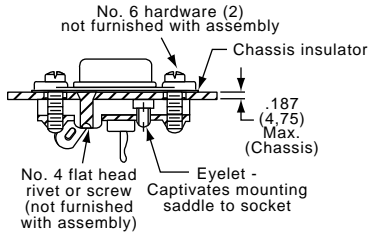


Figure 1

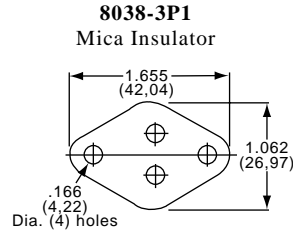
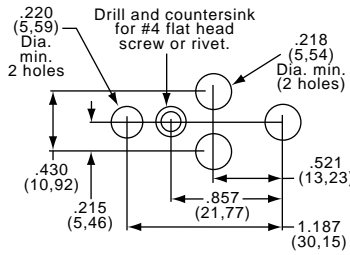


Figure 2

Recommended Chassis Cutout Standard



Recommended Chassis Cutout 8080-1G17 and 8080-1G45

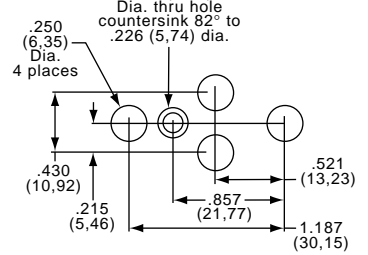


Figure 3

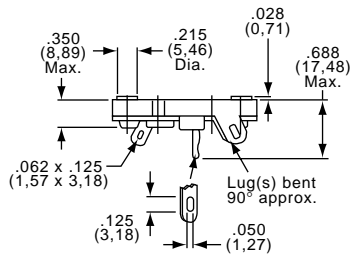
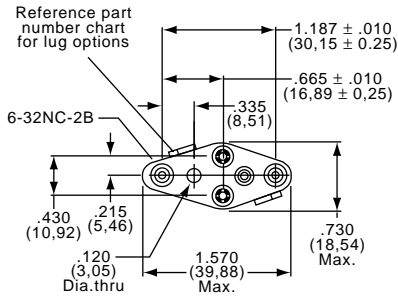


Figure 4

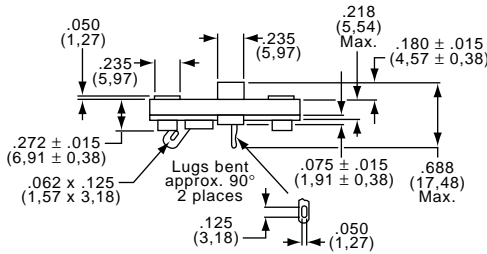
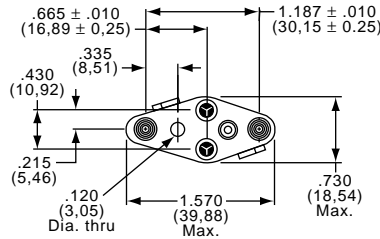


Figure 5

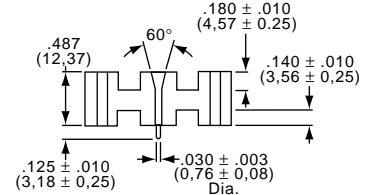
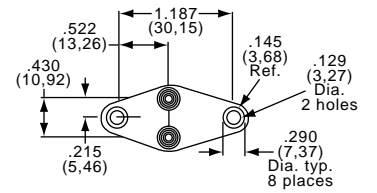


Figure 6

PART NUMBER / STANDARD CONFIGURATIONS

.040 Diameter Pin				
Part Number	Insulator	Contact Plating	Solder Lugs	Figure
8080-1G1	Phenolic	Electro-Tin		4
8080-1G45				5
8080-1G13	Diallyl Phthalate	Silver	Two Solder Lugs	4
8080-1G27	Phenolic			
8080-1G2	Diallyl Phthalate	Gold		4
8080-1G7	Phenolic			
8080-1G10	Diallyl Phthalate	Electro-Tin		4
8080-1G3	Phenolic			
8080-1G24	Diallyl Phthalate	Silver	One Solder Lug	4
8080-1G29	Phenolic			
8080-1G4	Diallyl Phthalate	Gold		4
8080-1G9	Phenolic			
8080-1G25	Diallyl Phthalate	Gold/Tin/Lead	P.C. Mount	7
8080-1G44	Thermoplastic Polyester			

PART NUMBER / STANDARD CONFIGURATIONS

.060 Diameter Pin				
Part Number	Insulator	Contact Plating	Solder Lugs	Figure
8080-1G15	Phenolic	Electro-Tin		4
8080-1G17				5
8080-1G31	Diallyl Phthalate	Silver	Two Solder Lugs	4
8080-1G32	Phenolic			
8080-1G16	Diallyl Phthalate	Gold		4
8080-1G33	Phenolic			
8080-1G34	Diallyl Phthalate	Electro-Tin	No Lugs	4
8080-1G20	Phenolic			
8080-1G14	Phenolic	Silver	One Solder Lug	4
8080-1G35	Diallyl Phthalate			
8080-1G36	Phenolic	Gold		4
8080-1G37	Diallyl Phthalate			
8080-1G38	Phenolic	Gold		4
8080-1G39	Diallyl Phthalate			

Need more technical information?

Consult your Thomas & Betts sales office listed on the back cover

